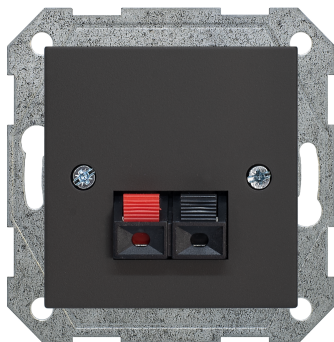


## Loudspeaker socket



### Reference number

IGL-2-01

### Loudspeaker socket, unshielded

for wires up to 4 mm<sup>2</sup>;  
with 2 front side plug terminals, and 2 screw connection in back (terminal block);  
metal supporting frame, for screw mounting;

Polycarbonate plastic (scratch-proof, PC). Surface sprayed manually by Alpocryl Emaillack paint, (developed in Switzerland), and laced with matt lack. Paint has high UV resistance, is flame resistant according to DIN EN13501-1 and chemically resistant according to DIN 68861/1B.

### Centre plates colour, EAN code:

R/ON31 - mat brown: individual barcode 4770025967997; package barcode 4770025968000;

R/ONC - mat cream: individual barcode 4770025000847; package barcode 4770025000854;

R/ON59 - mat black: individual barcode 4770025001783; package barcode 4770025001790;

### Technical specifications:

Connection possibilities	25 V ~, 60 V DC
Holder for connector / module	1x hi-fi loudspeaker 10-200W
Poles	Metal mounting plate
Protection	2
Dept	IP 20
	28 mm