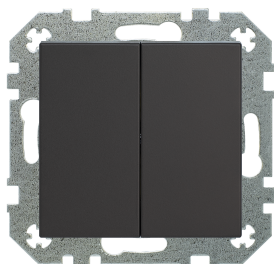


Product data sheet

LIREGUS

2-gang switch 1-pole, 1-way



Reference number

IJ5.10-203-01

Flush mount 2-gang switch 1-pole, 1-way 10A/250V, without frame

1 pole
screwless terminals for wires up to 2.5 mm²

Intended use

- dept 27mm;
- installation in flush box according to DIN 49073;
- operation with suitable cover;
- fits to all Retro and Epsilon serie frames.

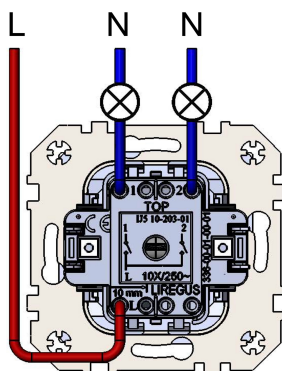
Polycarbonate plastic (scratch-proof, PC). Surface sprayed manually by Alpocryl Emaillack paint, (developed in Switzerland), and laked with matt lack. Paint has high UV resistance, is flame resistant according to DIN EN13501-1 and chemically resistant according to DIN 68861/1B.

Centre plates colour, EAN code:

R/ON31 - mat brown: individual barcode 4770025967317; package barcode 4770025967324;

R/ONC - mat cream: individual barcode 4770025000168; package barcode 4770025000175;

R/ON59 - mat black: individual barcode 4770025001103; package barcode 4770025001110;



Technical specifications:

Input voltage, frequency AC 250 V +- 10% , 50/60 Hz

Standarts

EN 50581
EN 60669-1
Low-Voltage Directive 2014/35/EU
RoHS Directive 2011/65/EU

Switching current 10A
Ambient temperature -5 ... +35 °C
Storage/transport temperature -20 ... +40 °C
Connection spring terminals
Centre plates material breakproof polycarbonate (PC)