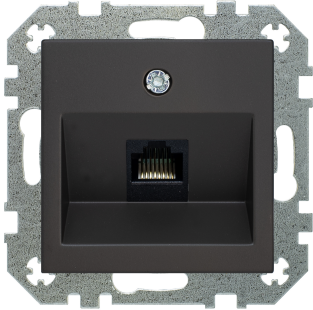


Product data sheet

Modular jack socket, cat. 6a, unshielded



Reference number

IKL-001-01

Modular jack socket, cat. 6a, unshielded, without frame

With LSA connection terminals RJ45, category 6a, 1000 Mbps, 10 Gbps

Metal supporting frame, for screw mounting;

Intended use, IP 2X protection;

Fits to all Retro and Epsilon serie frames;

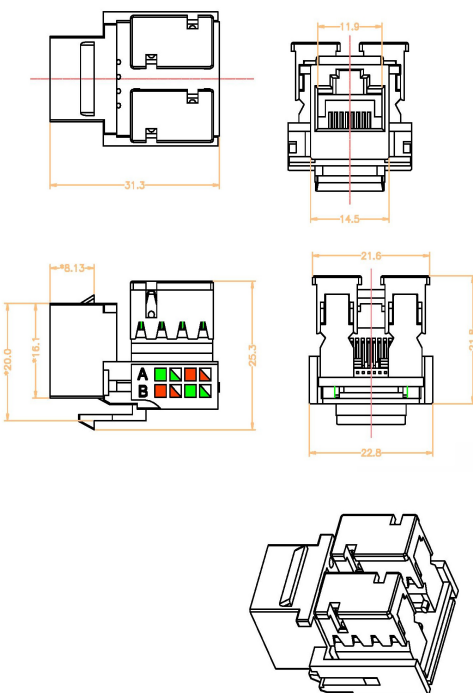
Polycarbonate plastic (scratch-proof, PC). Surface sprayed manually by Alpocryl Emaillack paint, (developed in Switzerland), and laced with matt lack. Paint has high UV resistance, is flame resistant according to DIN EN13501-1 and chemically resistant according to DIN 68861/1B.

Centre plates colour, EAN code:

IKL-001-01.R/ON31 - mat brown, 4770025967898; package barcode 4770025967904;

IKL-001-01.R/ONC - mat cream, 4770025000748; package barcode 4770025000755;

IKL-001-01.R/ON59 - mat black, 4770025001684; package barcode 4770025001691;



Technical specifications:

Corresponds to Cat. 6 cable acc. to

Connector type (A)

Holder for connector / module

Poles

Protection

Storage/transport temperature

Customs tariff number

ISO / IEC 11801

RJ 45, category 6a, 1000 Mbps, 10 Gbps

Metal mounting plate

8

IP 20

-20 ... +40 °C

8536699008