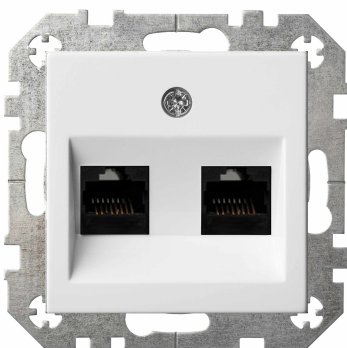


## Modular jack socket, cat. 6a, 2x, unshielded



### Reference number

IKL-002-01

Double modular jack socket, cat. 6a, unshielded

with LSA connection terminals  
2x RJ 45, category 6a, 1000 Mbps, 10 Gbps  
Metal supporting frame, for screw mounting

Polycarbonate plastic (scratch-proof, PC), glossy

### Centre plates colour, EAN code:

IKL-002-01.E/B - White, 4770025869765, 10pc. package 4770025870259  
IKL-002-01.E/S - Sandy, 4770025870723, 10pc. package 4770025871195  
IKL-002-01.E/R - Brown, 4770025873373, 10pc. package 4770025962817  
IKL-002-01.E/Mt - Metallic, 4770025853078, 10pc. package 4770025962824  
IKL-002-01.E/J - Black, 4770025873397, 10pc. package 4770025962831  
IKL-002-01.E/Ch - Champagne, 4770025875537, 10pc. package 4770025875544

### Technical specifications:

Corresponds to Cat. 6a cable acc. to	ISO / IEC 11801
Connectors type (A)	2x RJ 45
Holder for connector / module	Metal mounting plate
Poles	8
Protection	IP 20
Customs tariff number	8536699008