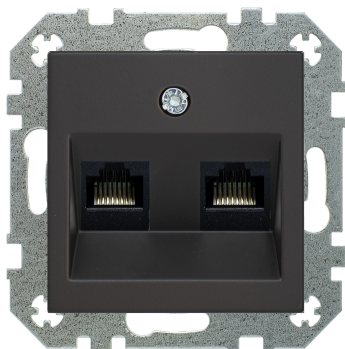


Modular jack socket, cat. 6a, 2x, unshielded



Reference number

IKL-002-01

Double modular jack socket, cat. 6a, unshielded, without frame

with LSA connection terminals
2x RJ45, category 6a, 1000 Mbps, 10 Gbps
Metal supporting frame, for screw mounting;
Intended use, IP 2X protection;
Fits to all Retro and Epsilon serie frames;

Polycarbonate plastic (scratch-proof, PC). Surface sprayed manually by Alpocryl Emaillack paint, (developed in Switzerland), and laked with matt lack. Paint has high UV resistance, is flame resistant according to DIN EN13501-1 and chemically resistant according to DIN 68861/1B.

Centre plates colour, EAN code:

IKL-002-01.R/ON31 - mat brown, 4770025967911; package barcode 4770025967928;

IKL-002-01.R/ONC - mat cream, 4770025000762; package barcode 4770025000779;

IKL-002-01.R/ON59 - mat black, 4770025001707; package barcode 4770025001714;

Technical specifications:

Corresponds to Cat. 6 cable acc. to
Connectors type (A)
Holder for connector / module
Poles
Protection
Storage/transport temperature
Customs tariff number

ISO / IEC 11801
2x RJ45, category 6a, 1000 Mbps, 10 Gbps
Metal mounting plate
8
IP 20
-20 ... +40 °C
8536699008