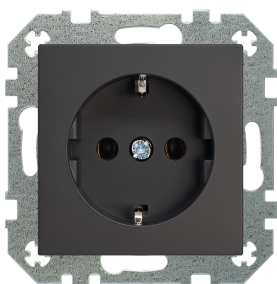


## 2P+E SHUCKO Socket - 16A 250V~



### Reference number

IKL16-204-01

SCHUKO® socket 16 A / 250 V~, without frame

Automatic terminals for wires up to 2.5 mm<sup>2</sup>;  
Metal supporting frame, for claw or screw mounting;  
Intended use, IP 2X protection;  
Fits to all Retro and Epsilon serie frames;

Polycarbonate plastic (scratch-proof, PC). Surface sprayed manually by Alpcryl Emaillack paint, (developed in Switzerland), and laked with matt lack. Paint has high UV resistance, is flame resistant according to DIN EN13501-1 and chemically resistant according to DIN 68861/1B.

### Centre plates colour, EAN code:

IKL16-204-01.R/ON31 - mat brown, 4770025967614; package barcode 4770025967621;

IKL16-204-01.R/ONC - mat cream, 4770025000465; package barcode 4770025000472;

IKL16-204-01.R/ON59 - mat black, 4770025001400; package barcode 4770025001417;

### Technical specifications:

Rated voltage, frequency	16 A / 250 V ~
Protection	IP 20
Customs tariff number	8536699008
Standarts	EN 50581: 2013-02 RoHS- Directive 2011/65/EU