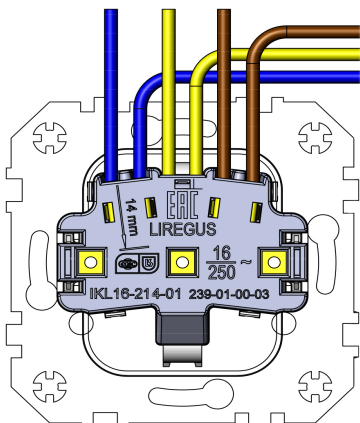
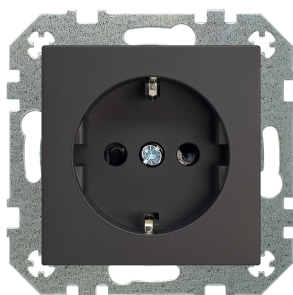


# Product data sheet

# LIREGUS

## 2P+E SHUCKO Socket with contact protection - 16A 250V~



### Reference number

IKL16-214-01

SCHUKO® socket 16 A / 250 V ~, with contact protection (shutter), without frame

Automatic terminals for wires up to 2.5 mm<sup>2</sup>;  
Metal supporting frame, for claw or screw mounting;  
Intended use, IP 2X protection;  
Fits to all Retro and Epsilon serie frames.

Polycarbonate plastic (scratch-proof, PC). Surface sprayed manually by Alpocryl Emaillack paint, (developed in Switzerland), and lacked with matt lack. Paint has high UV resistance, is flame resistant according to DIN EN13501-1 and chemically resistant according to DIN 68861/1B.

### Centre plates colour, EAN code:

IKL16-214-01.R/ON31 - mat brown, 4770025967638; package barcode 4770025967645;

IKL16-214-01.R/ONC - mat cream, 4770025000489; package barcode 4770025000496;

IKL16-214-01.R/ON59 - mat black, 4770025001424; package barcode 4770025001431;

### Technical specifications:

Rated voltage, frequency  
Protection

16 A / 250 V ~  
IP 20

### Standarts

EN 50581: 2013-02  
RoHS- Directive 2011/65/EU